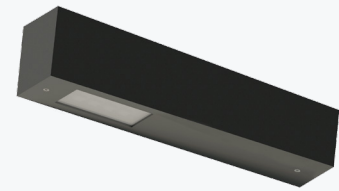


CRATUS is a versatile and efficient integrated pole solution for public lighting, which can be applied in various environments. Its simple and robust design makes it attractive, complemented by its luminous power.

With LEDs with a high color rendering index (Ra>70) and high overall luminous efficiency between 119 and 129 lm/W. LEDs with a high useful life (>100 000h), with different color temperatures available.

Usually applied on poles of 3 to 8 meters.



PRODUCT DESCRIPTION

Assembly	Post; Column:
Body	Steel sheet with anti-corrosive hot-dip galvanizing surface treatment;
Application	Urban streets; Squares; Parking lots;
CRI	Ra >70;
Diffuser	T -Transparente; (em vidro temperado)

PRODUCT OPTIONS

Control	Possibility of integrating connection plugs (NEMA and Zhaga), for control system integration;
----------------	---

FINISHES

Gr	Grey (AZKO Gris 900 sable or 72-5T3)
-----------	--------------------------------------

Other finishes on request

ELECTRICAL SPECIFICATIONS

Max. Supply Current	900 mA;
Power Factor	> 0,90;
Class of electrical protection	I ;



STANDARDS (PRODUCTS MANUFACTURED ACCORDING TO:)

EN 60598-1:2018 + A1:2018
EN 60598-2-3:2003 + A1:2011

PACKAGE

Dimension (mm)	550x140x140 (NO POST)
Weight (Kg)	13

LIGHT PROJECTION AREAS

	Projected surface	0.148 m ²
	Projected lateral surface	0.074 m ²

MECHANICAL DRAWINGS (mm)



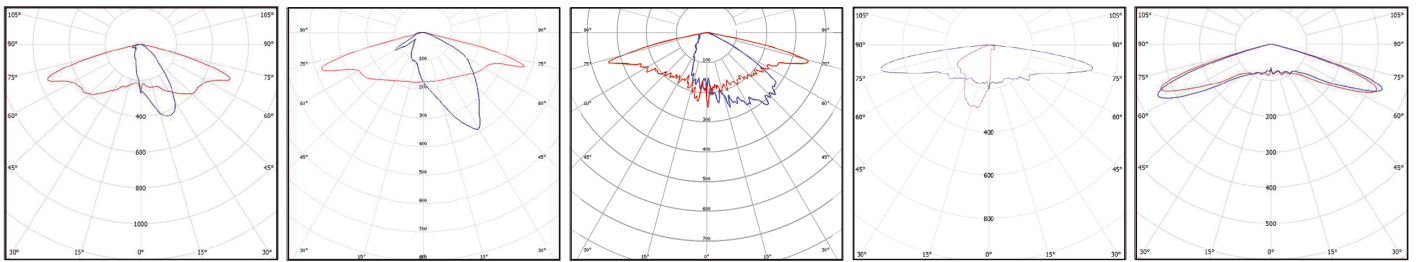
PHOTOMETRIC SPECIFICATIONS

MODEL	PERFORMANCE	POWER (W)	PHOTOMETRIC CODE	LUMINOUS FLUX (lm)	SYSTEM EFFICIENCY* (lm/W)
CRATUS M I (1x8)	HO	18	730	2160	119
			740	2231	123
			750	2231	123
	HE	14	730	1735	123
			740	1792	127
			750	1792	127
CRATUS M II (2x8)	HO	36	730	4321	121
			740	4463	125
			750	4463	125
	HE	28	730	3470	125
			740	3583	129
			750	3583	129

NOTE: Nominal values at temperature (Tp - 25°C) | Transparent diffuser | Asymmetrical lens | (*) - Normal system (without control);
The luminous flux and input power of the luminaire are indicative values valid for an ambient temperature of 25°C. The actual flux emitted by the luminaire depends on environmental conditions (e.g. temperature and pollution) and may vary according to specific configurations. The reported values are subject to the tolerances in technology.

HO - High output flux;
HE - High efficiency;

POLAR DIAGRAM



A-T2

A-T3

A-ME

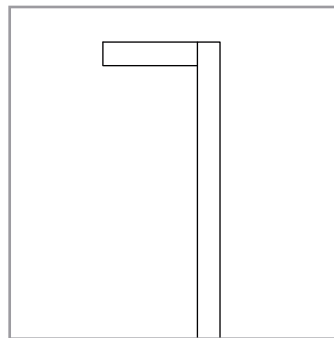
A-SCL

VSM

ORDER EXAMPLE

PRODUCT FAMILY	PERFORMANCE	PHOTOMETRIC CODE	LENS	DIFFUSER	FINISHING	OPTIONS
CRATUS S I (1x8)	HO	730	A-T2	T	Cz	Zhaga

ILLUSTRATIVE IMAGES



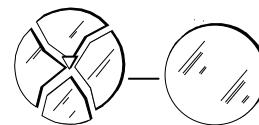
NOTA

(*) Desenho em posição normal de funcionamento.
 (**) Binário de aperto do parafuso de fixação de acordo com a norma EN 60598-2-3 (Máx 8 N m).

NOTES



RISK OF
ELECTRIC SHOCK



LUMINAIRES WITH GLASS.
Must be replaced when cracked

This device is not suitable for pricking out.
Light source not user-replaceable.

For more information on the different architectures, solutions and functionalities available, please contact Lightenjin.

Under the general terms of the supply of our services and/or equipment, Lightenjin declines any responsibility for the use or purpose assigned to them, which are the sole and exclusive responsibility of the customer.

Lightenjin reserves the right to change the information contained in this document without prior notice.

LIGHTENJIN II - LIGHTING INDUSTRY, LDA

PARQUE EMPRESARIAL DO CASARÃO, AVENIDA DAS 2 RODAS, LOTE 36A, 3750-041 AGUADA DE CIMA | PORTUGAL
 tel: +351 234 080 117 | fax: +351 234 640 064 | geral@lightenjin.pt

