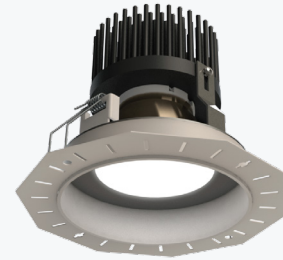


ELEMENTARE TRIMLESS family is a downlight solution without a trim flange, ideal for integration into false plaster ceilings.

With LEDs with a high Color Rendering Index (Ra>90) and a high overall luminous efficacy of between 85 and 114 lm/W. LEDs with a long service life (>50,000h), with different color temperatures available.



PRODUCT DESCRIPTION

Mounting Type	Recessed; (False plaster ceiling)
Rim	Color-coated aluminum;
Application	Commercial spaces; Housing;
CRI	Ra >90;
Diffuser	F- Frost; T - Transparent;

ELECTRICAL SPECIFICATIONS

Max. Power supply output	900 mA;
Power Factor	> 0,95;
Protection class	III ;

STANDARDS (PRODUCTS MANUFACTURED ACCORDING TO:)

EN 60598-1:2004
EN 60598-2-2:2012

PACKAGE

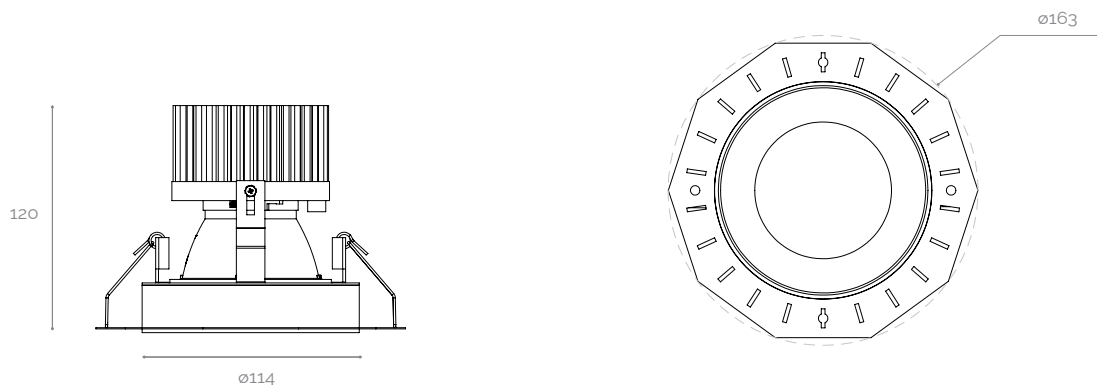
Dimension (mm)	250x200x185
Weight (kg)	0,9

FINISHES

Wh	White (RAL 9110)
Gr	Grey (RAL 7040)

Different finishes upon request

MECHANICAL DRAWINGS (mm)



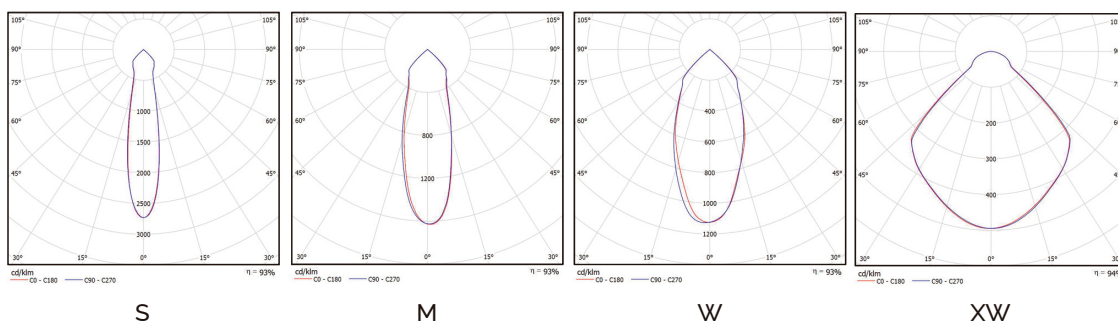
PHOTOMETRIC SPECIFICATIONS

REFLECTOR	PERFORMANCE	POWER (W)	PHOTOMETRIC CODE	LUMINOUS FLUX (lm)	SYSTEM EFFICIENCY* (lm/W)
S	HO	35	827	3588	103
			830	3737	107
			840	3886	111
			850	3886	111
			927	2980	85
			930	3089	88
			940	3339	95
	HE	28	827	2870	104
			830	2990	108
			840	3109	112
			850	3109	112
			927	2384	86
			930	2471	89
			940	2671	97
M	HO	35	827	3588	103
			830	3737	107
			840	3886	111
			850	3886	111
			927	2980	85
			930	3089	88
			940	3339	95
	HE	28	827	2870	104
			830	2990	108
			840	3109	112
			850	3109	112
			927	2384	86
			930	2471	89
			940	2671	97
W	HO	35	827	3588	103
			830	3737	107
			840	3886	111
			850	3886	111
			927	2980	85
			930	3089	88
			940	3339	95
	HE	28	827	2870	104
			830	2990	108
			840	3109	112
			850	3109	112
			927	2384	86
			930	2471	89
			940	2671	97
XW	HO	35	827	3626	104
			830	3777	108
			840	3928	112
			850	3928	112
			927	3012	86
			930	3122	89
			940	3374	96
	HE	28	827	2901	105
			830	3022	109
			840	3142	114
			850	3142	114
			927	2410	87
			930	2498	90
			940	2700	98

NOTE: Nominal values at temperature (Tp - 25°C) | Transparent diffuser | (*) - Normal system (without control);
 The luminous flux and input power of the luminaire are indicative values valid for an ambient temperature of 25°C. The actual flux emitted by the luminaire depends on environmental conditions (e.g. temperature and pollution) and may vary according to specific configurations. The reported values are subject to the tolerances in technology.

HO - High output flux;
 HE - High efficiency;

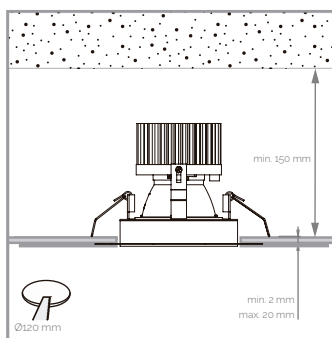
POLAR DIAGRAM



ORDER EXAMPLE

PRODUCT FAMILY	PERFORMANCE	PHOTOMETRIC CODE	LENS	DIFFUSER	FINISHING	OPTIONS
ELEMENTARE TRIMLESS 120	HO	927	M	F	Br	-

ILLUSTRATIVE IMAGES



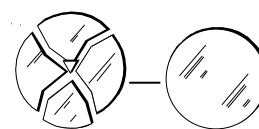
NOTES



RISK OF
ELECTRIC SHOCK



THE PRODUCT MUST NOT BE COVERED
WITH INSULATING OR SIMILAR MATERIAL



LUMINAIRES WITH GLASS.
Must be replaced when cracked

This device is suitable for pricking out.
Light source not user-replaceable.

For more information on the different architectures, solutions and functionalities available, please contact Lightenjin.

Under the general terms of the supply of our services and/or equipment, Lightenjin declines any responsibility for the use or purpose assigned to them, which are the sole and exclusive responsibility of the customer.

Lightenjin reserves the right to change the information contained in this document without prior notice.

LIGHTENJIN II - LIGHTING INDUSTRY, LDA

PARQUE EMPRESARIAL DO CASARÃO, AVENIDA DAS 2 RODAS, LOTE 36A, 3750-041 AGUADA DE CIMA | PORTUGAL
tel: +351 234 080 117 | fax: +351 234 640 064 | geral@lightenjin.pt

