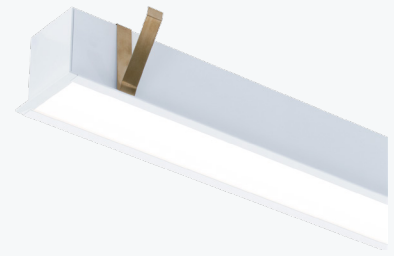


LINNE E is a simple and modular linear fitting, versatile in terms of the lengths and configurations available.

This product is suitable for offices, commercial spaces and circulation areas due to its high energy efficiency and dimming capacity.

With LEDs with a high Color Rendering Index (Ra>80) and a high overall luminous efficacy of between 118 and 142 lm/W. Long-life LEDs (>50,000h), with different color temperatures available.



PRODUCT DESCRIPTION

Assembly	Built-in;
Profile	Aluminum, thermolacquered in color;
Application	Commercial spaces; Circulation areas; Exhibition areas;
CRI	Ra >80;
Diffuser	O - Opaline;

ELECTRICAL SPECIFICATIONS

Max. Supply Current	275 mA;
Power Factor	> 0,90;
Class of electrical protection	I;

STANDARDS (PRODUCTS MANUFACTURED ACCORDING TO:)

EN 60598-1:2004
 EN 60598-2-2:2023

FINISHES

Br	White (RAL 9110)
Pt	Black (RAL 9005)
Cz	Grey (RAL 7040)

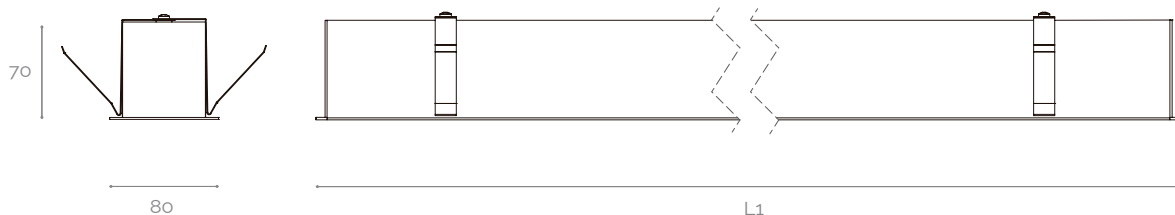
Other finishes on request

PACKAGE

Model	Dimension (mm)	Weight (Kg)
1x44	L1x70x80	1,5
2x44	L1x70x80	2,5
3x44	L1x70x80	3,0
4x44	L1x70x80	5,0
5x44	L1x70x80	6,0
6x44	L1x70x80	7,0

MECHANICAL DRAWINGS (mm)

MODEL	L1 (mm)	HOLE IN THE CEILING (EXT. mm)
1x44	564	574
2x44	1124	1134
3x44	1684	1694
4x44	2248	2258
5x44	2808	2818
6x44	3368	3378



PHOTOMETRIC SPECIFICATIONS

MODEL	PERFORMANCE	POWER (W)	PHOTOMETRIC CODE	LUMINOUS FLUX (lm)	SYSTEM EFFICIENCY* (lm/W)
1x44 (Aprox. 564 mm)	HO	21	827	2472	118
			830	2583	123
			840	2731	130
			850	2731	130
	HE	15	827	1833	120
			830	1915	125
			840	2025	132
			850	2025	132
2x44 (Aprox. 1124 mm)	HO	42	827	4945	119
			830	5166	124
			840	5461	132
			850	5461	132
	HE	30	827	3666	123
			830	3830	128
			840	4049	136
			850	4049	136
3x44 (Aprox. 1684 mm)	HO	61	827	7417	122
			830	7749	127
			840	8192	134
			850	8192	134
	HE	44	827	5499	124
			830	5746	130
			840	6074	137
			850	6074	137
4x44 (Aprox. 2248 mm)	HO	80	827	9889	123
			830	10332	129
			840	10922	136
			850	10922	136
	HE	58	827	7332	127
			830	7661	133
			840	8099	140
			850	8099	140
5x44 (Aprox. 2308 mm)	HO	99	827	12362	124
			830	12915	130
			840	13653	137
			850	13653	137
	HE	71	827	9166	128
			830	9576	134
			840	10123	142
			850	10123	142
6x44 (Aprox. 3368 mm)	HO	118	827	14834	126
			830	15498	131
			840	16384	139
			850	16384	139
	HE	86	827	10999	128
			830	11491	134
			840	12148	142
			850	12148	142

NOTE: Nominal values at temperature (Tp - 25°C) | (°) - Normal system (without control);

The luminaire's luminous flux and input power are indicative values valid for an ambient temperature of 25°C. The actual flux emitted by the luminaire depends on environmental conditions (e.g. temperature and pollution) and may vary according to specific configurations. The reported values are subject to the tolerances in technology.

HO - High output flux;

HE - High efficiency;

MODELS

START



MIDDLE

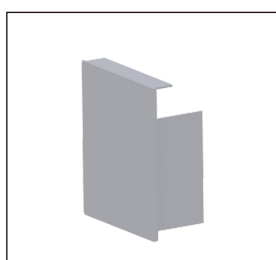


INDIVIDUAL

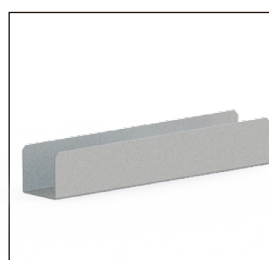


ACCESSORIES

ILLUSTRATIVE IMAGES

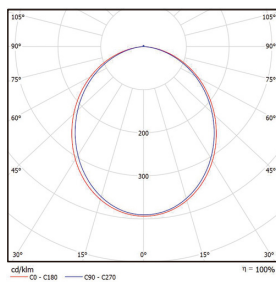


TOP AND BOTTOM LINE



UNION STRUCTURE

POLAR DIAGRAM

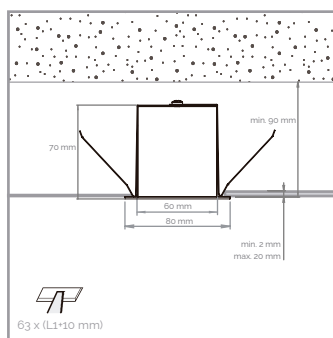


O

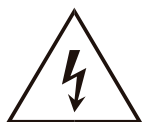
ORDER EXAMPLE

PRODUCT FAMILY	PERFORMANCE	PHOTOMETRIC CODE	DIFFUSER	FINISHING	OPTIONS
LINNE E O (1x44)	HE	830	O	Br	-

ILLUSTRATIVE IMAGES



NOTES



RISK OF
ELECTRIC SHOCK



THE PRODUCT MUST NOT BE COVERED
WITH INSULATING OR SIMILAR MATERIAL

This device is suitable for pricking out.
Light source not user-replaceable.

For more information on the different architectures, solutions and functionalities available, please contact Lightenjin.

Under the general terms of the supply of our services and/or equipment, Lightenjin declines any responsibility for the use or purpose assigned to them, which are the sole and exclusive responsibility of the customer.

Lightenjin reserves the right to change the information contained in this document without prior notice.

LIGHTENJIN II - LIGHTING INDUSTRY, LDA

PARQUE EMPRESARIAL DO CASARÃO, AVENIDA DAS 2 RODAS, LOTE 36A. 3750-041 AGUADA DE CIMA | PORTUGAL
 tel: +351 234 080 117 | fax: +351 234 640 064 | geral@lightenjin.pt

