

LINNE S90 DI is a linear, suspended luminaire with direct and indirect light emission. A versatile luminaire from the point of view of available lengths.

With LEDs with a high Color rendering index (Ra>80) and a high overall luminous efficacy of between 118 and 141 lm/W. LEDs with a long service life (>50,000h), with different color temperatures available.



PRODUCT DESCRIPTION

Assembly	Wall projection; Ceiling projection;
Profile	Aluminum;
Application	Commercial spaces; Exhibition areas; Service areas;
CRI	Ra >80;
Diffuser (optional)	O - Opaline; (direct emission) Pris - Prismatic; (LINNEA UP lens - Indirect emission)

ELECTRICAL SPECIFICATIONS

Max. Supply Current	275 mA;
Power Factor	> 0,90;
Class of electrical protection	I;

STANDARDS (PRODUCTS MANUFACTURED ACCORDING TO:)

EN 60598-1:2004

PACKAGE

Model	Dimension (mm)	Weight (Kg)
1x44	685x70x100	2,2
2x44	1240x70x100	3,2
3x44	1800x70x100	4,8
4x44	2365x70x100	5,
5x44	3015x70x100	7,4
6x44	3575x70x100	8,9

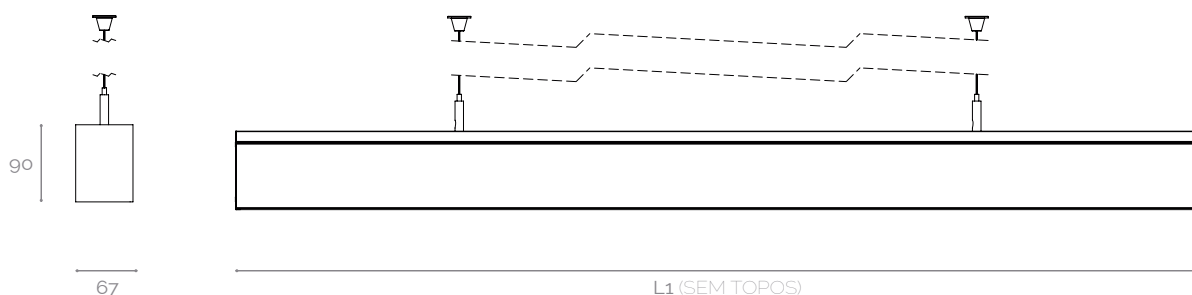
FINISHES

Wh	White (g110)
-----------	--------------

Other finishes on request

MECHANICAL DRAWINGS (mm)

MODEL	L1 (mm)
1x44	565
2x44	1124
3x44	1684
4x44	2248
5x44	2810
6x44	3370



PHOTOMETRIC SPECIFICATIONS

MODEL	PERFORMANCE	POWER (W)	PHOTOMETRIC CODE	LUMINOUS FLUX (lm)	SYSTEM EFFICIENCY* (lm/W)
1x44 (Appx. 565mm)	HO	28	827	2472 + 841	118
			830	2583 + 878	124
			840	2730 + 929	131
			850	2730 + 929	131
	HE	20	827	1833 + 560	121
			830	1915 + 585	126
			840	2024 + 619	134
			850	2024 + 619	134
2x44 (Appx. 1124mm)	HO	62	827	4944 + 2523	120
			830	5166 + 2636	126
			840	5461 + 2787	133
			850	5461 + 2787	133
	HE	44	827	3666 + 1682	122
			830	3830 + 1757	128
			840	4049 + 1858	135
			850	4049 + 1858	135
3x44 (Appx. 1684mm)	HO	95	827	7416 + 4205	122
			830	7749 + 4394	128
			840	8191 + 4645	135
			850	8191 + 4645	135
	HE	67	827	5499 + 2803	124
			830	5745 + 2929	129
			840	6073 + 3096	137
			850	6073 + 3096	137
4x44 (Appx. 2248mm)	HO	127	827	9889 + 5888	124
			830	10332 + 6151	129
			840	10922 + 6503	137
			850	10922 + 6503	137
	HE	89	827	7332 + 3925	126
			830	7660 + 4101	132
			840	8098 + 4335	139
			850	8098 + 4335	139
5x44 (Appx. 2810mm)	HO	159	827	12361 + 7570	125
			830	12915 + 7909	131
			840	13653 + 8361	138
			850	13653 + 8361	138
	HE	112	827	9165 + 5047	127
			830	9576 + 5273	133
			840	10123 + 5574	140
			850	10123 + 5574	140
6x44 (Appx. 3370mm)	HO	190	827	14833 + 9253	127
			830	15498 + 9667	132
			840	16383 + 10219	140
			850	16383 + 10219	140
	HE	135	827	10998 + 6168	127
			830	11491 + 6444	133
			840	12147 + 6813	141
			850	12147 + 6813	141

NOTE: Nominal values at temperature (T_p-25°) | (*) - Normal system (without control);

The luminaire's luminous flux and input power are indicative values valid for an ambient temperature of 25°C. The actual flux emitted by the luminaire depends on environmental conditions (e.g. temperature and pollution) and may vary according to specific configurations. The reported values are subject to the tolerances in technology.

HO - High output flux;
HE - High efficiency;

ACCESSORIES

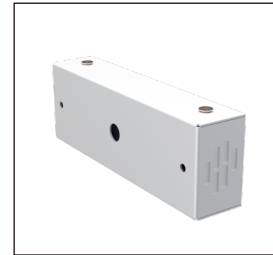
ILLUSTRATIVE IMAGES



TOP AND BOTTOM LINE

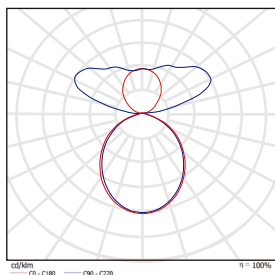


JUNCTION STRUCTURE



PROTRUDING WALL FIXING KIT

POLAR DIAGRAM



O + Linnea UP

ORDER EXAMPLE

PRODUCT FAMILY	PERFORMANCE	PHOTOMETRIC CODE	LENS	DIFFUSER	FINISHING	OPTIONS
LINNE S90 DI (2x44)	HO	830	Linea up (direct lighting)	Pris + Direct lighting	Br	-

NOTES



RISK OF
ELECTRIC SHOCK

This device is suitable for pricking out.
 Light source not user-replaceable.

For more information on the different architectures, solutions and functionalities available, please contact Lightenjin.
 Under the general terms of the supply of our services and/or equipment, Lightenjin declines any responsibility for the use or purpose assigned to them, which are the sole and exclusive responsibility of the customer.
 Lightenjin reserves the right to change the information contained in this document without prior notice.

LIGHTENJIN II - LIGHTING INDUSTRY, LDA

PARQUE EMPRESARIAL DO CASARÃO, AVENIDA DAS 2 RODAS, LOTE 36A. 3750-041 ÁGUADA DE CIMA | PORTUGAL
 tel: +351 234 080 117 | fax: +351 234 640 064 | geral@lightenjin.pt

