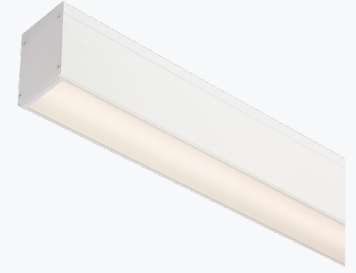


**LINNE S90** is a linear, suspended luminaire that is versatile in terms of available lengths.

With LEDs with a high Color Rendering Index (Ra>80) and a high overall luminous efficacy of between 118 and 142 lm/W. LEDs with a long service life (>50,000h), with different color temperatures available.



**PRODUCT DESCRIPTION**

<b>Assembly</b>	Suspension;
<b>Profile</b>	Aluminum;
<b>Application</b>	Commercial spaces; Circulation areas; Exhibition areas;
<b>CRI</b>	Ra >80;
<b>Diffuser</b>	O - Opaline;

**ELECTRICAL SPECIFICATIONS**

<b>Max. Supply Current</b>	275 mA;
<b>Power Factor</b>	> 0,90;
<b>Class of electrical protection</b>	I;

**STANDARDS (PRODUCTS MANUFACTURED ACCORDING TO:)**

EN 60598-1:2004

**FINISHES**

<b>Wh</b>	White (RAL 9110)
<b>Bk</b>	Black (RAL 9005)
<b>Gr</b>	Grey (RAL 7040)

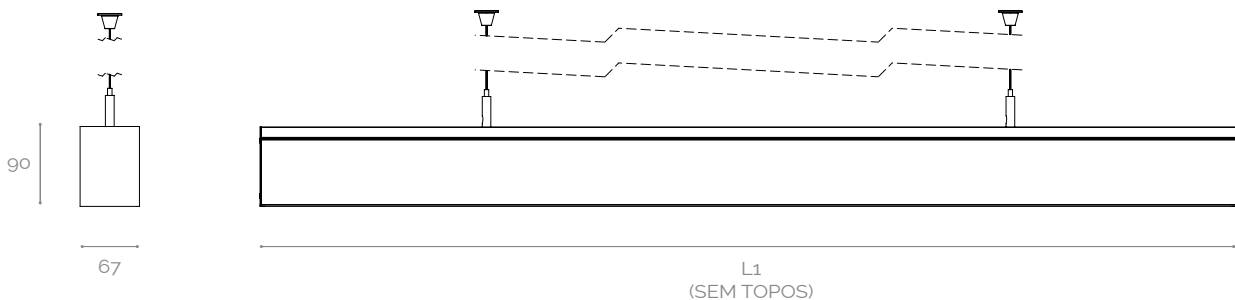
Other finishes on request

**PACKAGE**

Model	Dimension (mm)	Weight (Kg)
1x44	685x70x100	1.6
2x44	1240x70x100	3.2
3x44	1800x70x100	4.0
4x44	2365x70x100	6.0
5x44	3015x70x100	7.4
6x44	3575x70x100	8.0

**MECHANICAL DRAWINGS (mm)**

MODEL	L1 (mm)
1x44	565
2x44	1124
3x44	1684
4x44	2248
5x44	2810
6x44	3370



**PHOTOMETRIC SPECIFICATIONS**

MODEL	PERFORMANCE	POWER (W)	PHOTOMETRIC CODE	LUMINOUS FLUX (lm)	SYSTEM EFFICIENCY* (lm/W)
1x44 (Aprox. 565 mm)	HO	21	827	2472	118
			830	2583	123
			840	2731	130
			850	2731	130
	HE	15	827	1833	120
			830	1915	125
			840	2025	132
			850	2025	132
2x44 (Aprox. 1124 mm)	HO	42	827	4945	119
			830	5166	124
			840	5461	132
			850	5461	132
	HE	30	827	3666	123
			830	3830	128
			840	4049	136
			850	4049	136
3x44 (Aprox. 1684 mm)	HO	61	827	7417	122
			830	7749	127
			840	8192	134
			850	8192	134
	HE	44	827	5499	124
			830	5746	130
			840	6074	137
			850	6074	137
4x44 (Aprox. 2248 mm)	HO	80	827	9889	123
			830	10332	129
			840	10922	136
			850	10922	136
	HE	58	827	7332	127
			830	7661	133
			840	8099	140
			850	8099	140
5x44 (Aprox. 2810 mm)	HO	99	827	12362	124
			830	12915	130
			840	13653	137
			850	13653	137
	HE	71	827	9166	128
			830	9576	134
			840	10123	142
			850	10123	142
6x44 (Aprox. 3370 mm)	HO	118	827	14834	126
			830	15498	131
			840	16384	139
			850	16384	139
	HE	86	827	10999	128
			830	11491	134
			840	12148	142
			850	12148	142

**NOTE:** Nominal values at temperature (Tp - 25°C) | (°) - Normal system (without control);

The luminaire's luminous flux and input power are indicative values valid for an ambient temperature of 25°C. The actual flux emitted by the luminaire depends on environmental conditions (e.g. temperature and pollution) and may vary according to specific configurations. The reported values are subject to the tolerances in technology.

HO - High output flux;

HE - High efficiency;

**ACCESSORIES**

ILLUSTRATIVE IMAGES

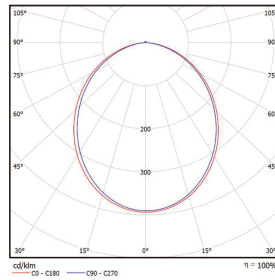


TOP AND BOTTOM LINE



UNION STRUCTURE

**POLAR DIAGRAM**

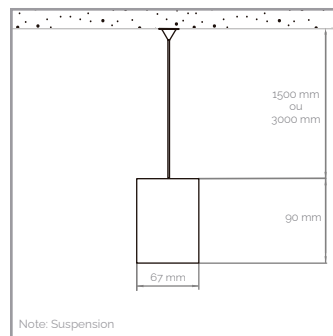


O

**ORDER EXAMPLE**

PRODUCT FAMILY	PERFORMANCE	PHOTOMETRIC CODE	DIFFUSER	FINISHING	OPTIONS
LINNE S90 O (1x44)	HE	830	O	Br	-

**ILLUSTRATIVE IMAGES**



**NOTES**



RISK OF  
ELECTRIC SHOCK

This device is suitable for pricking out.  
Light source not user-replaceable.

For more information on the different architectures, solutions and functionalities available, please contact Lightenjin.

Under the general terms of the supply of our services and/or equipment, Lightenjin declines any responsibility for the use or purpose assigned to them, which are the sole and exclusive responsibility of the customer.

Lightenjin reserves the right to change the information contained in this document without prior notice.

**LIGHTENJIN II - LIGHTING INDUSTRY, LDA**

PARQUE EMPRESARIAL DO CASARÃO, AVENIDA DAS 2 RODAS, LOTE 36A. 3750-041 AGUADA DE CIMA | PORTUGAL  
tel: +351 234 080 117 | fax: +351 234 640 064 | geral@lightenjin.pt

