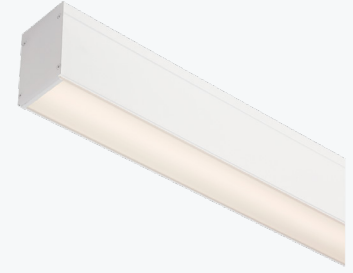


LINNE S90 is a linear, suspended luminaire that is versatile in terms of available lengths.

With LEDs with a high Color Rendering Index (Ra>80) and a high overall luminous efficacy of between 118 and 142 lm/W. LEDs with a long service life (>50,000h), with different color temperatures available.



PRODUCT DESCRIPTION

Mounting Type	Suspended;
Perfil	Aluminum;
Application	Commercial spaces; Circulation areas; Exhibition areas;
CRI	Ra >80;
Diffuser	Pris - Prismatic;

ELECTRICAL SPECIFICATIONS

Max. Power supply output	275 mA;
Power Factor	> 0,90;
Protection class	I;

STANDARDS (PRODUCTS MANUFACTURED ACCORDING TO:)

EN 60598-1:2004

FINISHES

Wh	White (RAL 9110)
Bk	Black (RAL 9005)
Gr	Grey (RAL 7040)

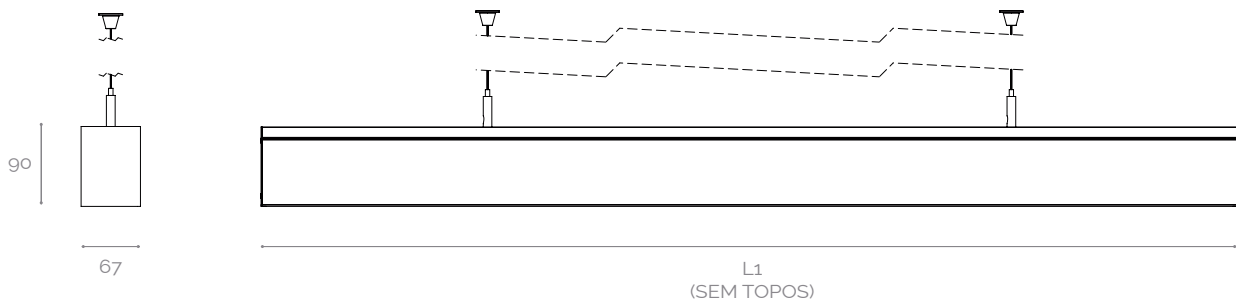
Different finishes upon request

PACKAGE

Model	Dimension (mm)	Weight (Kg)
1x44	685x70x100	1.6
2x44	1240x70x100	3.2
3x44	1800x70x100	4.0
4x44	2365x70x100	6.0
5x44	3015x70x100	7.4
6x44	3575x70x100	8.0

MECHANICAL DRAWINGS (mm)

MODEL	L1 (mm)
1x44	565
2x44	1124
3x44	1684
4x44	2248
5x44	2810
6x44	3370



PHOTOMETRIC SPECIFICATIONS

MODEL	PERFORMANCE	POWER (W)	PHOTOMETRIC CODE	LUMINOUS FLUX (lm)	SYSTEM EFFICIENCY* (lm/W)
1x44 (Aprox. 565 mm)	HO	21	827	2485	118
			830	2597	124
			840	2745	131
			850	2745	131
	HE	15	827	1843	121
			830	1925	126
			840	2035	133
			850	2035	133
2x44 (Aprox. 1124 mm)	HO	42	827	4971	120
			830	5194	125
			840	5490	132
			850	5490	132
	HE	30	827	3686	123
			830	3851	129
			840	4071	136
			850	4071	136
3x44 (Aprox. 1684 mm)	HO	61	827	7456	122
			830	7790	128
			840	8235	135
			850	8235	135
	HE	44	827	5529	125
			830	5776	130
			840	6106	138
			850	6106	138
4x44 (Aprox. 2248 mm)	HO	80	827	9942	124
			830	10387	129
			840	10981	137
			850	10981	137
	HE	58	827	7372	128
			830	7702	133
			840	8142	141
			850	8142	141
5x44 (Aprox. 2810 mm)	HO	99	827	12427	125
			830	12984	131
			840	13726	138
			850	13726	138
	HE	71	827	9214	129
			830	9627	135
			840	10177	142
			850	10177	142
6x44 (Aprox. 3370 mm)	HO	118	827	14913	126
			830	15581	132
			840	16471	140
			850	16471	140
	HE	86	827	11057	129
			830	11552	135
			840	12213	142
			850	12213	142

NOTE: Nominal values at temperature (Tp - 25°C) | (°) - Normal system (without control);

The luminaire's luminous flux and input power are indicative values valid for an ambient temperature of 25°C. The actual flux emitted by the luminaire depends on environmental conditions (e.g. temperature and pollution) and may vary according to specific configurations. The reported values are subject to the tolerances in technology.

HO - High output flux;

HE - High efficiency;

ACCESSORIES

ILLUSTRATIVE IMAGES



TOP AND BOTTOM LINE

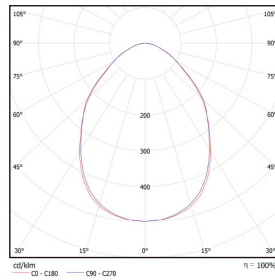


UNION STRUCTURE



PROTRUDING FIXING KIT

POLAR DIAGRAM

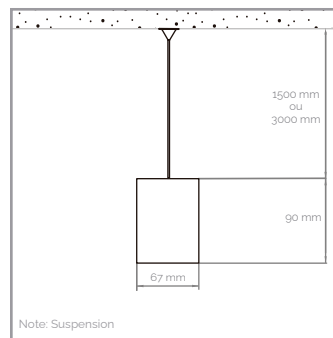


Pris

ORDER EXAMPLE

PRODUCT FAMILY	PERFORMANCE	PHOTOMETRIC CODE	DIFFUSER	FINISHING	OPTIONS
LINNE S90 Pris (1x44)	HE	830	Pris	Br	-

ILLUSTRATIVE IMAGES



NOTES



RISK OF
ELECTRIC SHOCK

This device is suitable for pricking out.
Light source not user-replaceable.

For more information on the different architectures, solutions and functionalities available, please contact Lightenjin.

Under the general terms of the supply of our services and/or equipment, Lightenjin declines any responsibility for the use or purpose assigned to them, which are the sole and exclusive responsibility of the customer.

Lightenjin reserves the right to change the information contained in this document without prior notice.

LIGHTENJIN II - LIGHTING INDUSTRY, LDA

PARQUE EMPRESARIAL DO CASARÃO, AVENIDA DAS 2 RODAS, LOTE 36A. 3750-041 AGUADA DE CIMA | PORTUGAL
tel: +351 234 080 117 | fax: +351 234 640 064 | geral@lightenjin.pt

