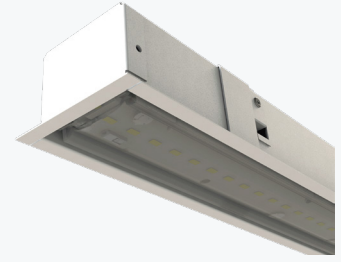


PURUS is a linear luminaire that is simple to assemble and modular, allowing you to create different configurations and lengths. A minimalist-style luminaire, designed to make it competitive both economically and in terms of energy efficiency.

With LEDs with a high color rendering index (Ra>80) and a high overall luminous efficacy of between 128 and 139 lm/W. LEDs with a long service life (>50,000h), with different color temperatures available.



PRODUCT DESCRIPTION

Mounting Type	Recessed;
Body	Sheet metal, lacquered in color;
Application	Offices; Commercial spaces; Exhibition areas; Circulation areas;
CRI	Ra >80;
Reflector	W - 90°;

ELECTRICAL SPECIFICATIONS

Max. Power supply output	275 mA;
Power Factor	> 0,90;
Protection class	I;

STANDARDS (PRODUCTS MANUFACTURED ACCORDING TO:)

EN 60598-1:2004
EN 60598-2-2:2012

FINISHES

Wh	White (RAL 9010)
-----------	------------------

Different finishes upon request

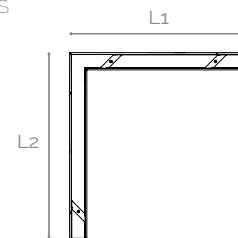
PACKAGE

Model	Dimension (mm)	Weight (Kg)
1x44	605x70x100	0.7
2x44	1155x70x100	1.3
3x44	1755x70x100	1.8

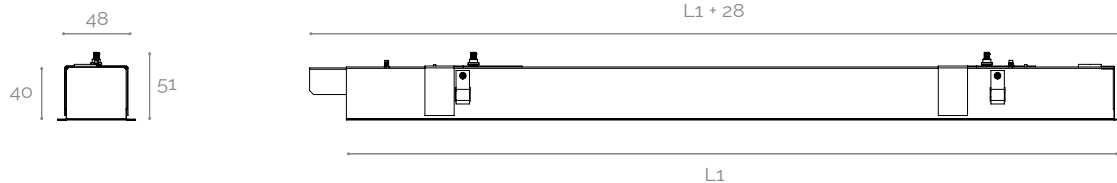
MECHANICAL DRAWINGS (mm)

MODEL	L1 (mm)	L2 (mm)	CEILING HOLE (mm)
MID-END	575	-	-
	1139	-	-
	1703	-	-
INDIVIDUAL	576	-	49x579
	1140	-	49x1143
	1704	-	49x1707
90° CORNER	583	627	-

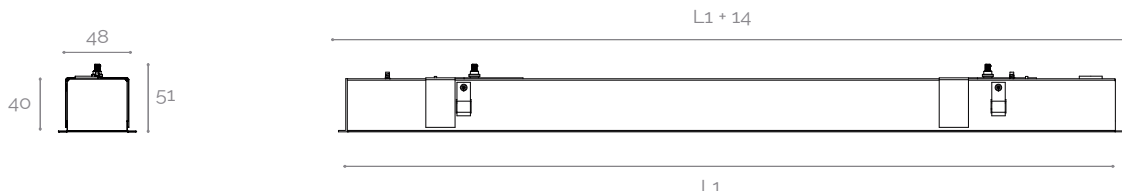
PURUS CANTO 90°
TECHNICAL DETAILS



PURUS MID-END
TECHNICAL DETAILS



PURUS INDIVIDUAL
TECHNICAL DETAILS



PHOTOMETRIC SPECIFICATIONS

MODEL	PERFORMANCE	POWER (W)	PHOTOMETRIC CODE	LUMINOUS FLUX (lm)	SYSTEM EFFICIENCY* (lm/W)
1x44 (Appx. 675mm)	HO	22	830	2868	128
			840	2956	132
	HE	17	830	2201	131
			840	2269	135
2x44 (Appx. 1133mm)	HO	44	830	5736	129
			840	5912	133
	90° CORNER HE	33	830	4402	134
			840	4537	138
3x44 (Appx. 1697mm)	HO	65	830	8604	132
			840	8868	136
	HE	46	830	6603	135
			840	6806	139

NOTE: Nominal values at temperature (T_p-65°) | Lens W | (°) - Normal system (without control);
The luminous flux and input power of the luminaire are indicative values valid for an ambient temperature of 25°C. The actual flux emitted by the luminaire depends on environmental conditions (e.g. temperature and pollution) and may vary according to specific configurations. The reported values are subject to the tolerances in technology.

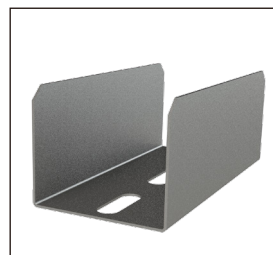
HO - High output flux;
HE - High efficiency;

ACCESSORIES

ILLUSTRATIVE IMAGES

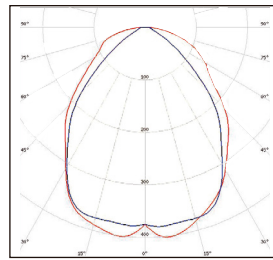


TOP AND BOTTOM LINE



JUNCTION STRUCTURE

POLAR DIAGRAM

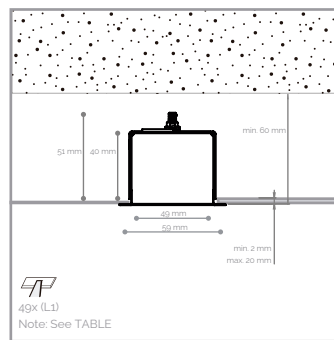


W

ORDER EXAMPLE

PRODUCT FAMILY	PERFORMANCE	PHOTOMETRIC CODE	LENS	FINISHING	OPTIONS
PURUS (2x44)	H0	830	W	Br	-

ILLUSTRATIVE IMAGES



NOTES



RISK OF
ELECTRIC SHOCK



THE PRODUCT MUST NOT BE COVERED
WITH INSULATING OR SIMILAR MATERIAL

This device is not suitable for pricking out.
Light source not user-replaceable.

For more information on the different architectures, solutions and functionalities available, please contact Lightenjin.

Under the general terms of the supply of our services and/or equipment, Lightenjin declines any responsibility for the use or purpose assigned to them, which are the sole and exclusive responsibility of the customer.

Lightenjin reserves the right to change the information contained in this document without prior notice.

LIGHTENJIN II - LIGHTING INDUSTRY, LDA

PARQUE EMPRESARIAL DO CASARÃO, AVENIDA DAS 2 RODAS, LOTE 36A. 3750-041 AGUADA DE CIMA | PORTUGAL
tel: +351 234 080 117 | fax: +351 234 640 064 | geral@lightenjin.pt

