

**STAGNUM** is a watertight reinforcement for surface mounting. Made of materials that guarantee excellent resistance to the elements. A very competitive lighting solution with high added value.

With LEDs with a high Color Rendering Index (Ra>80) and high overall luminous efficacy. LEDs with a long service life (>50,000h), with different color temperatures available.



**PRODUCT DESCRIPTION**

<b>Mounting Type</b>	Surface mounted;
<b>Housing</b>	Fiberglass-reinforced polycarbonate;
<b>Watertight seal</b>	Watertight seal
<b>Clamping springs</b>	Polycarbonate;
<b>Application</b>	Industrial spaces; Service areas; Garages; Car wash areas;
<b>CRI</b>	Ra >80;
<b>Diffuser</b>	O - Opaline; (in polycarbonate)
<b>Operating temperature</b>	Ta=35°C;

**ELECTRICAL SPECIFICATIONS**

<b>Max. Power supply output</b>	275 mA;
<b>Power Factor</b>	> 0,90;
<b>Protection class</b>	I;

**STANDARDS (PRODUCTS MANUFACTURED ACCORDING TO:)**

EN 60598-1:2004

**PRODUCT OPTIONS**

- Emergency kit;
- HFS sensor;
- Semi-opal diffuser;  
(STAGNUM LED 600)
- 20% opal diffuser;  
(STAGNUM LED 1200 | 1500)

**FINISHES**

<b>Gr</b>	Grey (RAL 7040)
-----------	-----------------

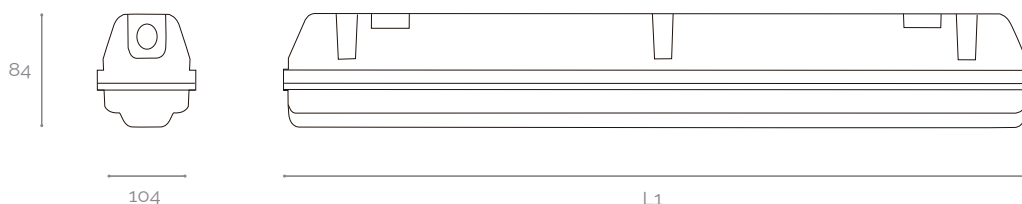
Different finishes upon request

**PACKAGE**

Model	Dimension (mm)	Weight (Kg)
600	680x100x90	1.1
1200	1280x100x90	1.8
1500	1580x100x90	2.2

**MECHANICAL DRAWINGS (mm)**

MODEL	L1 (mm)	Distance between holes (mm)
STAGNUM ECO LED   600	660	390
STAGNUM ECO LED   1200	1277	800
STAGNUM ECO LED   1500	1573	1100



PHOTOMETRIC SPECIFICATIONS

MODEL	PERFORMANCE	POWER (W)	PHOTOMETRIC CODE	LUMINOUS FLUX (lm)	SYSTEM EFFICIENCY* (lm/W)
STAGNUM LED 600 <i>(Aprox. 660 mm)</i>	HO	23	830	2311	103
			840	2436	108
			850	2472	110
	HE	18	830	1988	108
			840	2096	114
			850	2126	115
STAGNUM LED 1200 <i>(Aprox. 1277 mm)</i>	HO	44	830	4621	105
			840	4872	111
			850	4943	112
	HE	36	830	3975	109
			840	4191	115
			850	4252	117
STAGNUM LED 1500 <i>(Aprox. 1573 mm)</i>	HO	54	8830	5777	106
			840	6090	112
			850	6179	114
	HE	45	830	4969	110
			840	5239	116
			850	5316	118

**NOTE:** Nominal values at temperature (Tp - 25°C) | Luminaire operating temperature: minimum (-25°C); maximum (60°C) | (\*) - Normal system (without control); The luminous flux and input power of the luminaire are indicative values valid for an ambient temperature of 25°C. The actual flux emitted by the luminaire depends on environmental conditions (e.g. temperature and pollution) and may vary according to specific configurations. The reported values are subject to the tolerances in technology.

HO - High output flow;  
HE - High efficiency;

PRODUCT OPTIONS

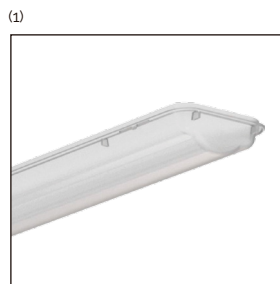
ILLUSTRATIVE IMAGES

EMERGENCY KIT;

HFS SENSOR;

SEMI-OPAL DIFFUSER; <sup>(1)</sup>  
STAGNUM LED 600

20% OPAL DIFFUSER <sup>(2)</sup>  
STAGNUM LED 1200 | 1600

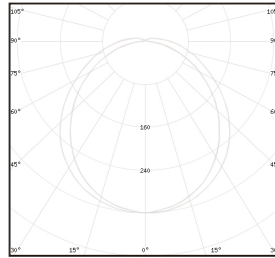


SEMI-OPAL DIFFUSER



20% OPAL DIFFUSER

POLAR DIAGRAM

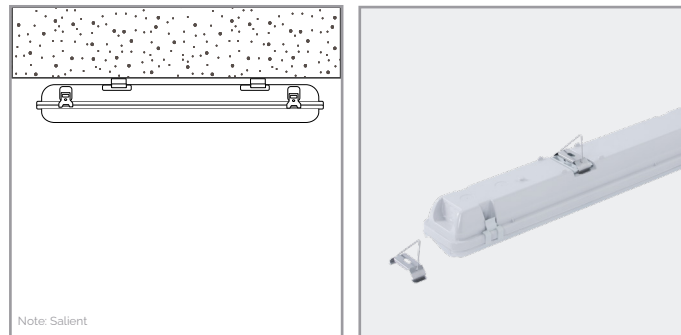


O

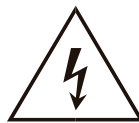
ORDER EXAMPLE

PRODUCT FAMILY	PERFORMANCE	PHOTOMETRIC CODE	DIFFUSER	FINISHING	OPTIONS
STAGNUM ECO (600)	HE	830	O	Cz	-

ILLUSTRATIVE IMAGES



NOTES



RISK OF  
ELECTRIC SHOCK

This device is suitable for pricking out.  
Light source not user-replaceable.

For more information on the different architectures, solutions and functionalities available, please contact Lightenjin.

Under the general terms of the supply of our services and/or equipment, Lightenjin declines any responsibility for the use or purpose assigned to them, which are the sole and exclusive responsibility of the customer.

Lightenjin reserves the right to change the information contained in this document without prior notice.

**LIGHTENJIN II - LIGHTING INDUSTRY, LDA**

PARQUE EMPRESARIAL DO CASARÃO, AVENIDA DAS 2 RODAS, LOTE 36A. 3750-041 AGUADA DE CIMA | PORTUGAL  
tel: +351 234 080 117 | fax: +351 234 640 064 | geral@lightenjin.pt

