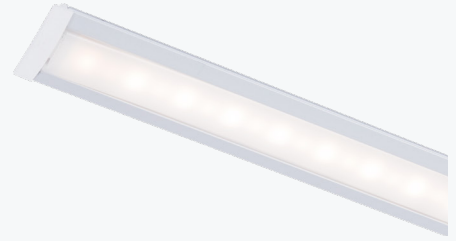


VLED is a compact and economical linear fixture suitable for short-distance decorative lighting. Sold with a transparent diffuser, and in individual modules - with the possibility of being configured in a continuous line.

With LEDs with a high Color Rendering Index (Ra>80) and a high overall luminous efficacy of between 130 and 290 lm/W. LEDs with a long service life (>50,000h), with different color temperatures available.



PRODUCT DESCRIPTION

Assembly	Built-in; (modular or in continuous lines)
Body	Aluminum profile, anodized;
Application	Commercial spaces; Exhibition areas; Circulation areas; Housing;
CRI	Ra >80;
Diffuser	O - Opaline;

ELECTRICAL SPECIFICATIONS

Class of electrical protection III ;

STANDARDS (PRODUCTS MANUFACTURED ACCORDING TO:)

EN 60598-1:2004
EN 60598-2-2:2023

PACKAGE

Model	Dimension (mm)	Weight (Kg)
500	600x80x80	0.10
560	600x80x80	0.12
1100	1200x80x80	0.22
1120	1200x80x80	0.23
1960	2190x80x80	0.39
2000	2230x80x80	0.39

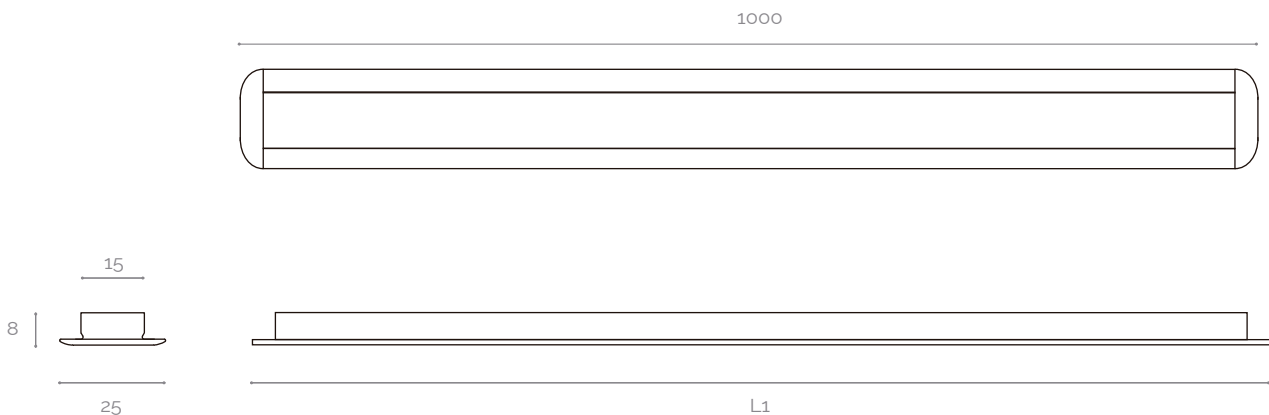
FINISHES

An	Anodized
-----------	----------

Other finishes on request

MECHANICAL DRAWINGS (mm)

L1 (mm)	HOLE IN THE CEILING (mm)
500	18x505
560	18x565
1100	18x1105
1120	18x1115
1960	18x1965
2000	18x2005



PHOTOMETRIC SPECIFICATIONS

L1 (mm)	PERFORMANCE	POWER (W)	INPUT VOLTAGE	PHOTOMETRIC CODE	LUMINOUS FLUX (lm)	SYSTEM EFFICIENCY* (lm/W)
500	ECO	6	24 V DC	830	675	105
				840	675	110
560	HO	18.7	48 V DC	830	1939	104
				840	2041	109
				850	2041	109
	HE	9.4	24 VDC	830	970	104
				840	1021	109
				850	1021	109
1100	ECO	14	24 V DC	830	1485	105
				840	1485	110
1120	HO	37.4	48 V DC	830	3878	104
				840	4082	109
				850	4082	109
	HE	18.7	24 V DC	830	1939	104
				840	2041	109
				850	2041	109
1960	HO	65.5	48 V DC	830	6787	104
				840	7144	109
				850	7144	106
	HE	32.8	24 V DC	830	3393	104
				840	3572	109
				850	3572	109
2000	ECO	28	24 V DC	830	2970	105
				840	2970	110

NOTE: Values relative to transparent lens | Values without taking into account losses relative to the power supply | (*) - Normal system (without control);
The luminous flux and input power of the luminaire are indicative values valid for an ambient temperature of 25°C. The actual flux emitted by the luminaire depends on environmental conditions (e.g. temperature and pollution) and may vary according to specific configurations. The reported values are subject to the tolerances in technology.

HO - High output flux;
HE - High efficiency;
ECO - Economical;

ACCESSORIES

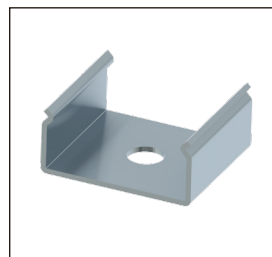
ILLUSTRATIVE IMAGES



TOP AND BOTTOM LINE

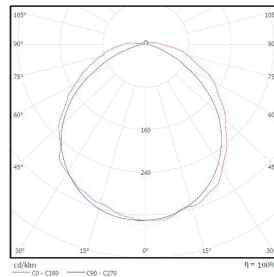


POWER SUPPLY



FIXING SPRING

POLAR DIAGRAM

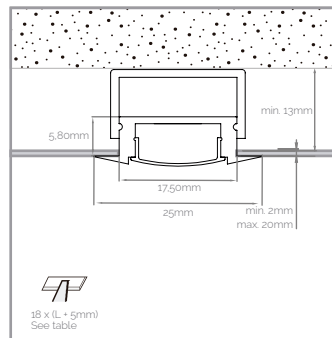


O

ORDER EXAMPLE

PRODUCT FAMILY	PERFORMANCE	PHOTOMETRIC CODE	DIFFUSER	FINISHING	OPTIONS
VLED E (1120 mm)	HE	840	T	An	-

ILLUSTRATIVE IMAGES



NOTES

This device is suitable for pricking out.
Light source not user-replaceable.
Device supplied without power supply.
Power cable must be at least 3G1 type HO5RN-F.

For more information on the different architectures, solutions and functionalities available, please contact Lightenjin.
Under the general terms of the supply of our services and/or equipment, Lightenjin declines any responsibility for the use or purpose assigned to them, which are the sole and exclusive responsibility of the customer.
Lightenjin reserves the right to change the information contained in this document without prior notice.

LIGHTENJIN II - LIGHTING INDUSTRY, LDA

PARQUE EMPRESARIAL DO CASARÃO, AVENIDA DAS 2 RODAS, LOTE 36A. 3750-041 AGUADA DE CIMA | PORTUGAL
tel: +351 234 080 117 | fax: +351 234 640 064 | geral@lightenjin.pt

