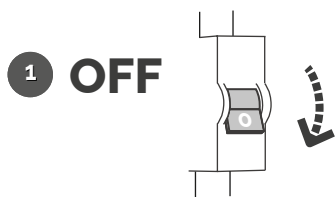
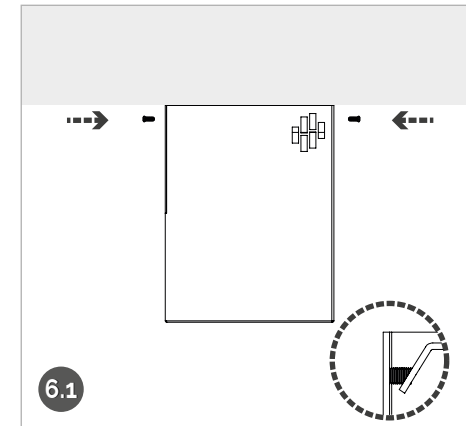
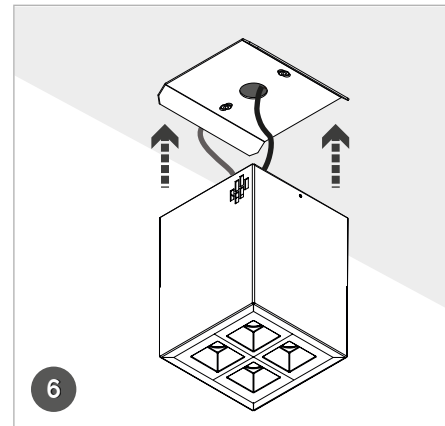
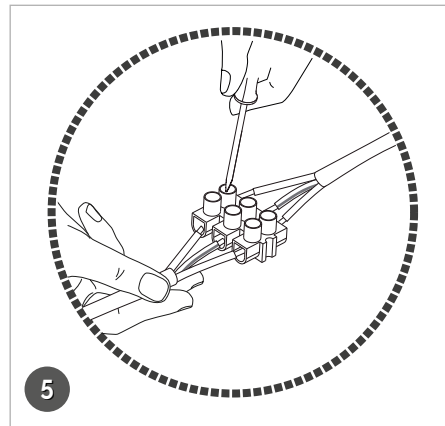
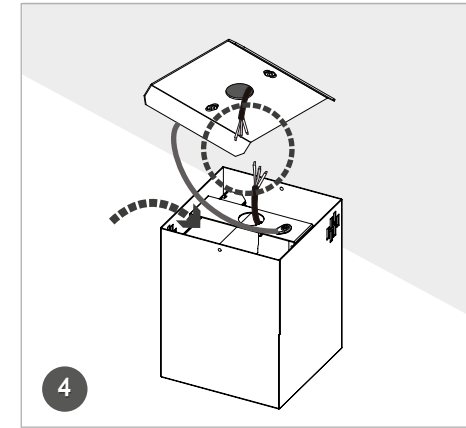
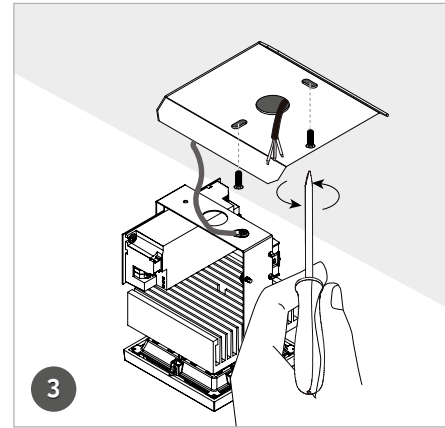
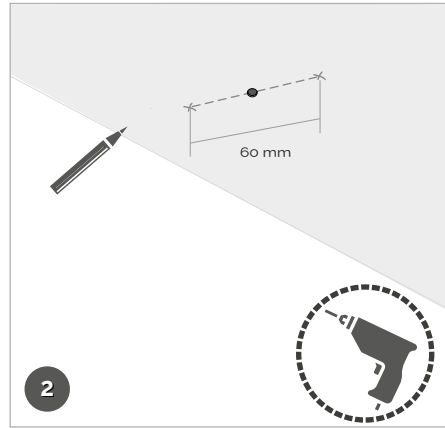


CODEX S

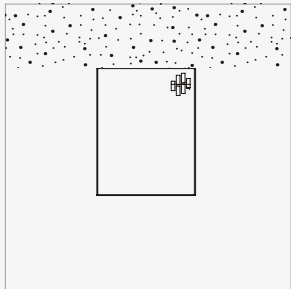


Instruções de montagem
Mounting instructions
Instructions de montage



- | | | |
|--|---|---|
| <p>1 ⚠️ Desligar o disjuntor correspondente à linha em intervenção;</p> | <p>Turn off the circuit breaker corresponding to the intervention line</p> | <p>Désactivez le disjoncteur correspondant à l'intervention en ligne</p> |
| <p>2 Realizar as marcações, e abrir furo no teto;
DISTÂNCIA ENTRE FUROS: 60mm</p> | <p>Make the markings and drill a hole in the ceiling;
DISTANCE BETWEEN HOLES: 60mm</p> | <p>Faites les marques et percez un trou dans le plafond ;
DISTANCE ENTRE LES TROUS : 60 mm</p> |
| <p>3 Aparafusar a tampa da luminária ao teto com os parafusos, mantendo o cabo de segurança fixo entre componentes;
PASSAR O CABO DE ALIMENTAÇÃO PELO FURO CENTRAL DA LUMINÁRIA;</p> | <p>Screw the luminaire cover to the ceiling with the screws, keeping the safety cable fixed between the components;
PASS THE POWER CABLE THROUGH THE CENTRAL HOLE IN THE LUMINAIRE;</p> | <p>Visser le couvercle du luminaire au plafond à l'aide des vis, en maintenant le câble de sécurité fixé entre les composants ;
FAIRE PASSER LE CÂBLE D'ALIMENTATION PAR LE TROU CENTRAL DU LUMINAIRE ;</p> |
| <p>4 Colocar o corpo dentro da carcaça;</p> | <p>Place the body inside the housing;</p> | <p>Placer le corps à l'intérieur du boîtier;</p> |
| <p>5 ⚠️ Eletrificar a luminária;
CONSULTAR ESQUEMA 1</p> | <p>Electrify the luminaire;
SEE SCHEME 1</p> | <p>Electrifier le luminaire ;
VOIR DIAGRAMME 1</p> |
| <p>6 ⚠️ Colocar o corpo da luminária, apertar os parafusos no corpo;
(*) GARANTIR A TANGÊNCIA DA LUMINÁRIA NO TETO</p> | <p>Place the body of the luminaire, tighten the pins on the body;
(*) ENSURE TANGENCY OF THE LUMINAIRE TO THE CEILING</p> | <p>Monter le corps du luminaire, serrer les goupilles sur le corps;
(*) ASSURER LA TANGENCE DU LUMINAIRE PAR RAPPORT AU PLAFOND</p> |
| <p>7 ⚠️ Ligar o disjuntor correspondente à linha em intervenção</p> | <p>Turn on the circuit breaker corresponding to the intervention line</p> | <p>Connectez le circuit correspondant disjoncteur à l'intervention de ligne</p> |

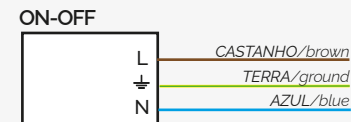
Nota
Note
Remarque



Distância entre furos: 60mm
Distance between holes: 60mm
Distance entre les trous : 60 mm

Este produto contém uma fonte de luz da classe energética A
This product contains an energy class A light source
Ce produit contient une source lumineuse de classe énergétique A

Esquema 1 | Scheme 1 | Schéma 1



IMPORTANTE: Para mais informação sobre as diferentes arquiteturas, soluções e funcionalidades disponíveis, por favor contactar a Lightenjin.

São Rejeitadas todas as responsabilidades por defeito ou danos provocados por montagem incorrecta da luminária, incorrecta alimentação e agentes externos.

IMPORTANT: For more information about different architectures, solutions and available functionalities, please contact Lightenjin

Are Rejected all liability for defects or damage caused by incorrect installation of the luminaire, Misfeeding and external agents.

IMPORTANT: Pour plus d'informations sur les différentes architectures de réseau, solutions et fonctionnalités disponibles, contactez Lightenjin.

Sont rejetées toute responsabilité pour les défauts ou les dommages causés par une mauvaise installation du luminaire, Mauvaise alimentation et les agents extérieures.

